

Jimmy Styks[®]

NIXT

• IRONHIDE •
C O N S T R U C T I O N

OWNER'S GUIDE

IMPORTANT

READ THIS IMPORTANT INFORMATION BEFORE USING YOUR STAND-UP PADDLEBOARD

DISREGARDING ANY OF THE SAFETY PRECAUTIONS AND INSTRUCTIONS CONTAINED IN THE OWNER'S MANUAL AND/OR ON THE PRODUCT MAY RESULT IN INJURY, INCLUDING THE POSSIBILITY OF DEATH.

- REVIEW THE WEIGHT CAPACITY LIMITATIONS OF THIS BOARD AND NEVER EXCEED IT. WWW.
JIMMYSTYKS.COM

- ALWAYS WEAR A COAST GUARD APPROVED PERSONAL FLOTATION DEVICE (PFD).

- NEVER GO PADDLEBOARDING IN SEVERE WEATHER OR WATER CONDITIONS THAT MIGHT AFFECT
YOUR ABILITY TO STEER THE BOARD OR RETURN TO SHORE.

- NEVER ALLOW MINORS TO USE THIS BOARD WITHOUT ADULT SUPERVISION.

- NEVER CONSUME ALCOHOL OR ANY OTHER SUBSTANCES THAT MAY IMPAIR YOUR COORDINATION,
JUDGEMENT, OR ABILITY TO SAFELY PADDLE THE BOARD.

- NEVER USE THIS BOARD BEYOND YOUR SKILLS OR ABILITY.

- NEVER USE THIS PRODUCT AFTER SUNSET, BEFORE DAWN OR AT ANY TIME IN POOR LIGHTING.

- CHECK LOCAL LAWS AND REGULATIONS REGARDING PROPER AND SAFE USE OF THIS PRODUCT.

- NEVER LEAVE BOARD EXPOSED TO DIRECT SUNLIGHT WHEN OUT OF THE WATER.

- DO NOT STORE PADDLE BOARD IN A WET BOARD BAG FOR EXTENDED PERIODS OF TIME.

- DO NOT LEAVE BOARD IN BAG UNDER DIRECT SUNLIGHT.

- TIGHTEN VENT CAP BEFORE TAKING BOARD INTO THE WATER.

- REGULARLY INSPECT VENT CAP O-RING FOR CRACKS, TEARS AND/OR DAMAGE BEFORE USE.

- FOR BEST VENTING, REPLACE YOUR CAP AND CAP SEAL ANNUALLY.

- REGISTER YOUR JIMMY STYKS®PADDLEBOARD ONLINE TO ACTIVATE PRODUCT WARRANTY.

TABLE OF CONTENTS

SECTION 1

MODELS, FEATURES AND ACCESSORIES PAGES 4 - 5

SECTION 2

CARE AND MAINTENANCE PAGES 6 - 7

SECTION 3

FIN AND INSTALLATION PAGE 8

SECTION 4

LEASH AND INSTALLATION PAGE 9

SECTION 5

PADDLES PAGES 10 - 11

SECTION 6

TRANSPORTATION TIPS PAGE 12

SECTION 7

LIMITED WARRANTY INFORMATION PAGE 13




SECTION 1

Jimmy Styks®

NXT

• **IRONHIDE** •
CONSTRUCTION

FEATURES

-  BUNGEE TIE-DOWN SYSTEM
-  LEASH PLUG
-  FIN BOX/FCS STYLE PLUGS

RIDER COMPATIBILITY

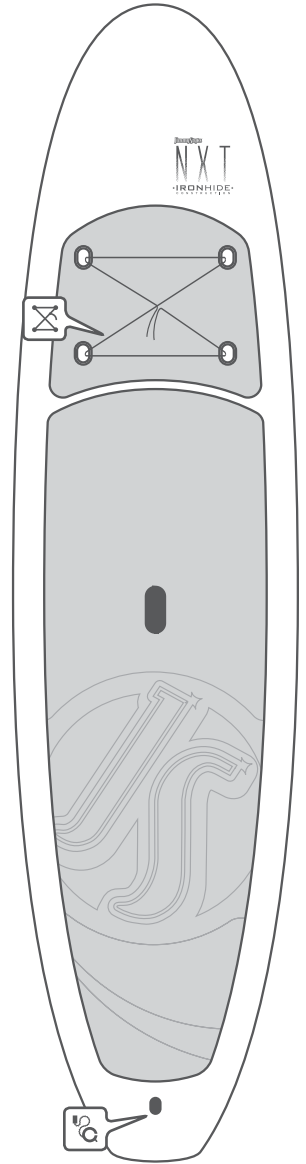
RIDER SKILL	NOVICE	_____	PRO
ENVIRONMENT	FLATWATER	_____	SURF
DURABILITY	FRAGILE	_____	RUGGED
PERFORMANCE	STABLE	_____	AGILE

VOLUME
206
LITERS

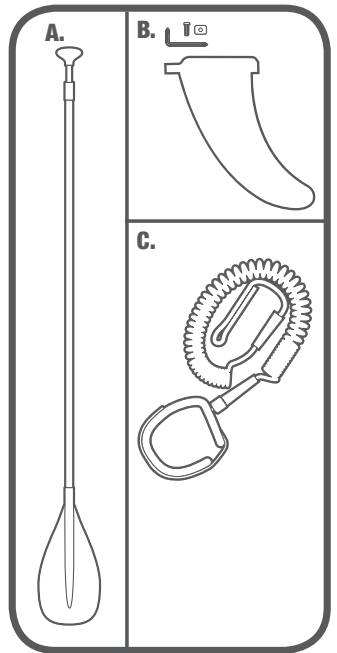
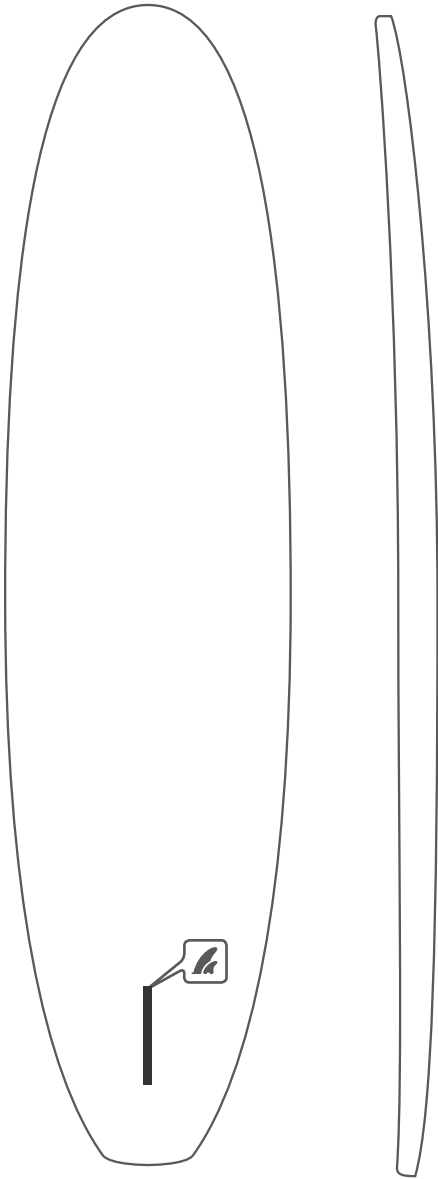
LIMIT
225
POUNDS

SPECIFICATIONS

LENGTH	10'10" (330 CM)
WIDTH	32" (81.3 CM)
THICKNESS	4.6" (11.7 CM)
ROCKER (N)	6.1" (15.6 CM)
ROCKER (T)	4.3" (10.8 CM)



MODELS, FEATURES AND ACCESSORIES



- A.** 1X ADJUSTABLE LENGTH PADDLE
- B.** 1X STABILIZER FIN + HARDWARE
- C.** 1X 10 FT. COIL LEASH

*INCLUDED ACCESSORIES VARY BY RETAILER

JimmyStyks.com

**QUESTIONS/COMMENTS:
1-800-370-0745**

SECTION 2



KEEP IN A WELL VENTILATED, SHADED AREA WHEN NOT IN USE.

Direct sunlight can damage/delaminate a board if left exposed for a period of time. Delamination is characterized by a separation of the board's core from the protective outer shell. Delamination is a damage that is not repairable and should be avoided at all costs. Keep your board in an area with good air flow and circulation. Leaving your board in a vehicle during the day (closed or open) elevates the risk for delamination.



LIMIT EXPOSURE OF DIRECT SUNLIGHT TO THE DECK AND TRACTION PAD.

While the benefits of a non-slip traction pad are obvious, they also increase the risk of overheating and delamination. While in use, water flowing over the deck helps to regulate surface temperature. But when the deck traction pad is dry, the effects of heat absorption are amplified when exposed to direct sunlight. In addition, traction pad colors may lose vibrance over time due to the bleaching effects of the sun. If you must expose your board to direct sunlight during transport or temporary storage, it is safest to keep the white (bottom) facing up.



DO NOT STORE YOUR BOARD IN A BOARD BAG FOR EXTENDED PERIODS OF TIME.

Board bags are intended for transportation protection, not full time storage. Prolonged storage of a wet board in a wet board bag will have adverse effects on the finish of your board, leading to the possibility of mold, and osmotic blisters. Storing your board in a board bag is not the same as placing it in the shade. Board bags will collect heat and potentially overheat your board.



RINSE SAND AND SALTWATER DEPOSITS FROM YOUR BOARD AFTER USE.

Sun, sand and saltwater will degrade any man-made material over time. Rinse off sand and saltwater deposits from your paddle board with fresh water and store in a cool, dry environment after each use.



INSPECT YOUR BOARD FOR DINGS AND CRACKS BEFORE AND AFTER EACH USE.

The polyurethane core of your board is highly absorbent and acts as a sponge when the protective watertight shell is compromised. To prevent your board from becoming waterlogged (heaviness and drag as a result of water absorption), regularly inspect the exterior for dings and cracks. If you spot a crack in the polyethylene shell, a kayak repair specialist will have greater success fixing your SUP than a vendor specializing in surfboard/sup repair.



OVERHEATING YOUR PADDLEBOARD IS **NOT** COVERED BY JIMMY STYKS® MANUFACTURERS WARRANTY!



REGISTER YOUR JIMMY STYKS®

Register your JIMMY STYKS® SUP online to activate your product warranty.

jimmystyks.com/registration.php

JimmyStyks.com

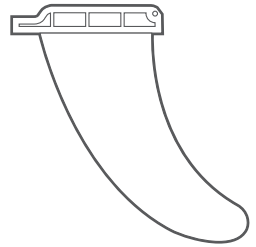
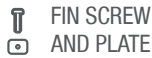
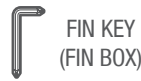
QUESTIONS/COMMENTS:
1-800-370-0745

SECTION 3

FIN AND INSTALLATION

FINS AND HARDWARE

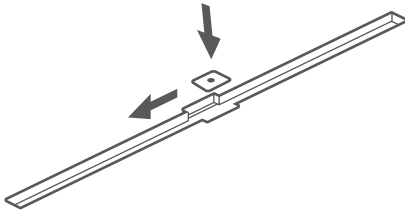
JIMMY STYKS® includes a center stabilizer and hardware with your SUP accessory package. We recommend removing fins after each use to prevent damage to the fin, fin box and board.



CENTER FIN INSTALLATION

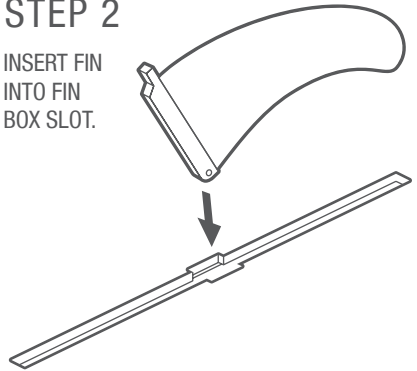
STEP 1

INSERT SCREW PLATE INTO FIN BOX SLOT AND SLIDE PLATE FORWARD.



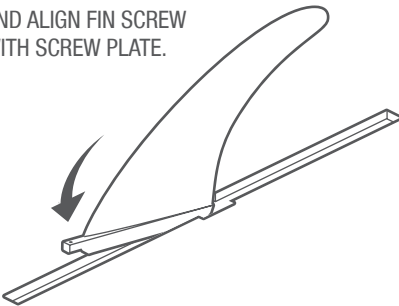
STEP 2

INSERT FIN INTO FIN BOX SLOT.



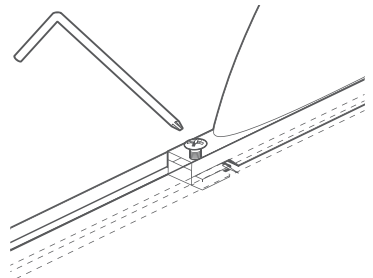
STEP 3

ROTATE FIN FORWARD AND ALIGN FIN SCREW WITH SCREW PLATE.



STEP 4

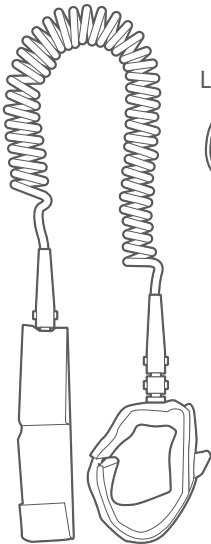
ADJUST FIN TO DESIRED POSITION AND TIGHTEN FIN SCREW.



LEASH

JIMMY STYKS® provides a 10 ft coil leash and a leash tie with your SUP accessory package. It is recommended that you remove your leash after use to prevent unintentional snagging. Wrapping a leash around board and fins may result in damage to the leash.

COIL LEASH

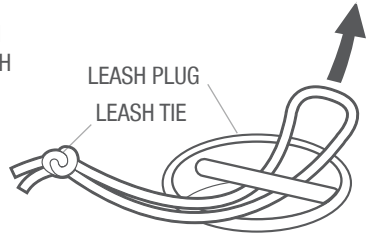


LEASH TIE

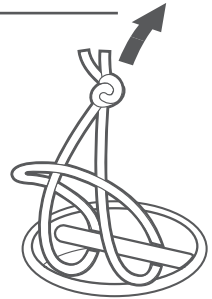


MAKING A LEASH LOOP

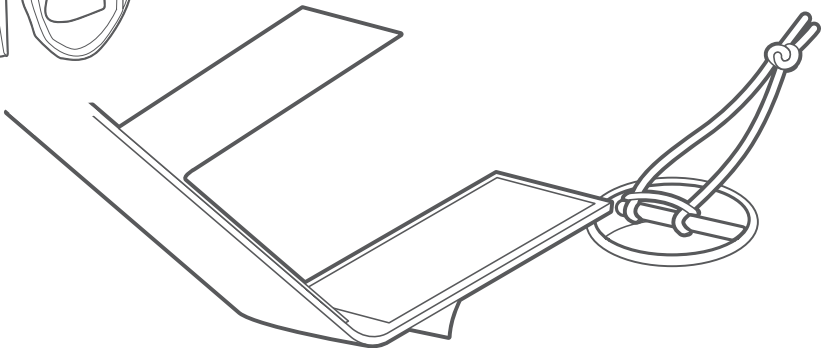
STEP 1
PULL LEASH TIE THROUGH EYELET.



STEP 2
PULL KNOT THROUGH LOOP AND PULL TIGHT.



STEP 3
OPEN VELCRO CUFF AND ATTACH LEASH TO LEASH LOOP.



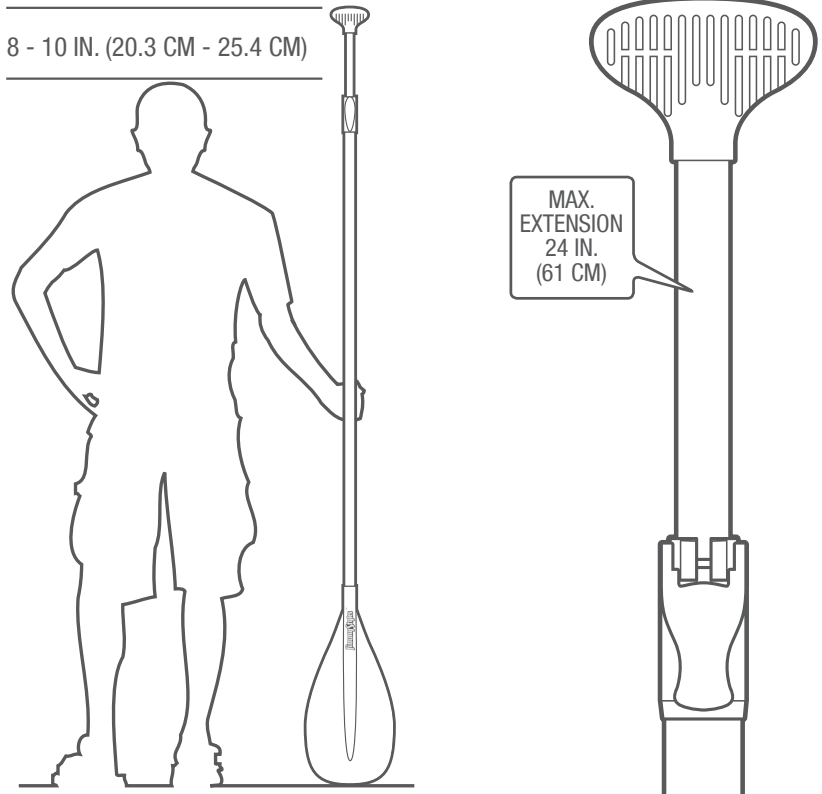
SECTION 5

JS ADJUSTABLE PADDLE SIZING



DO NOT EXTEND UPPER SHAFT BEYOND 24 IN (61CM).

Extending beyond the maximum extension limit can result in permanent damage to the adjustment clip while paddling. We recommend paddle to be rinsed with fresh water after every use and upper shaft removed for drying.

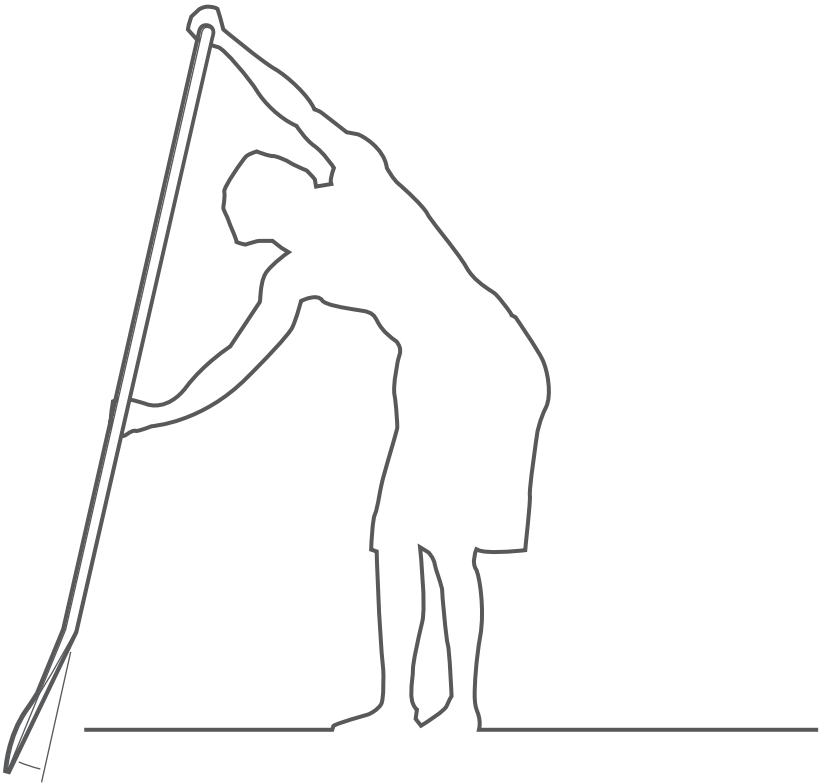




FOR BEST RESULTS, LEARN TO USE THE PADDLE CORRECTLY.

Paddles have a FORWARD and BACK facing side. The ribbed side of the handle, adjustable lever and “JIMMY STYKS” logo on the blade indicate the FORWARD facing side. Additionally, blade should be in a FORWARD ANGLE (as shown on right).

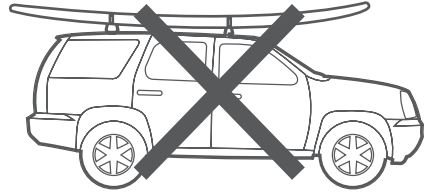
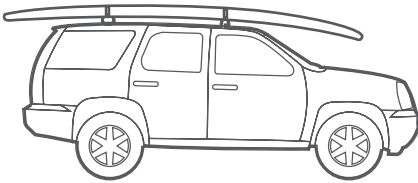
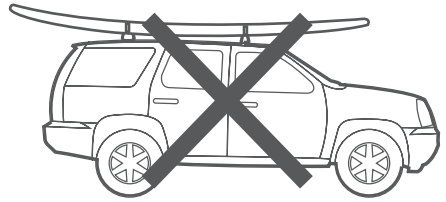
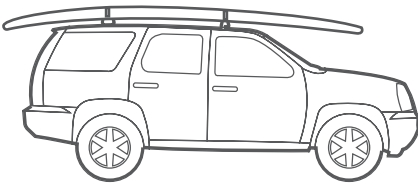
Proper paddle orientation while paddling will maximize stroke efficiency and move the greatest volume of water when paddling. By practicing proper paddling techniques, you will be able to paddle longer and farther while conserving energy.





WHEN STRAPPING TO ROOF, BOARD SHOULD BE BOTTOM SIDE UP.

When securing your paddle board to the roof of a vehicle, always place the board bottom side up. Placing the board topside up will create wind drag and instability while driving. Placing board nose forward or tail forward are both acceptable means of transport.



OVER-TIGHTENING STRAPS MAY RESULT IN PRESSURE DINGS.



PADDED STRAPS ARE RECOMMENDED OVER NON-PADDED NYLON STRAPS.

JIMMY STYKS® OFFERS A LIMITED 365 DAY WARRANTY AGAINST DEFECTS IN MATERIALS AND WORKMANSHIP.

TERMS OF WARRANTY:

Your JIMMY STYKS® product is guaranteed to be free of defects in material and workmanship for a period of no more than 365 days from the date of purchase. If the product does not conform to the warranty, JIMMY STYKS®, at its discretion will issue a new, like new, or similar model product, excluding any shipping charges. Warranty extends to original purchaser only and is non-transferable. Sales receipt and original packaging materials are required.

WARRANTY:

JIMMY STYKS® will make every effort to produce boards to the highest quality and standards in the industry. We do quality checks in our factories in Asia and in our warehouses in North America in an effort to guarantee each board's quality before shipping. Because of the nature of surfing and paddle boarding we cannot warranty the performance of any board or shape for individual riders and varying levels of skills and abilities. Furthermore, we cannot guarantee against damage or breakage and cannot protect or warranty against circumstances outside of our control. In the event of a new board being removed from a box and not in good condition please contact the office for resolution. You will be asked for a copy of your sales receipt and photos of the damage in question, as well as original packaging material to verify if damage was due to shipping. If it is deemed a manufacturing or material flaw, we will issue an RMA number. This number along with the damaged product will need to be returned to the closest warehouse (Vancouver or Huntington Beach) at customer's expense. Upon physical review, JIMMY STYKS® will make its final determination as to the nature of the damage or flaw and issue a replacement product (model depends on availability), or store credit. Shipping will be the responsibility of the customer. We are not responsible for damage or defects once the board has been used. Damage is defined as impact with any object or material, damage due to dropping, loading, unloading, or transport, alterations or modifications, repairs, natural disasters, fires, temperatures below 4.4 °C (40 °F), or above 43 °C (110 °F), any further use of a board once a claim has been reported, transport or storage of a board with a closed air valve, use of a board in the water with a loose or removed air valve, failure to clean and service air vent valve, storage of a board in extremely hot or humid conditions including a wet or damp board bag.

RETURNS AND EXCHANGES:

JIMMY STYKS® will exchange any new, unused product for company credit providing it is accompanied by an original sales receipt and all original packaging. This will not include any shipping charges or expenses. Product must be in new condition and will be subject to the inspection of staff.



NEED TO FILE A WARRANTY CLAIM?

Submit a warranty form and photos online:

www.jimmystyks.com/warranty.php

JimmyStyks.com

QUESTIONS/COMMENTS:
1-800-370-0745

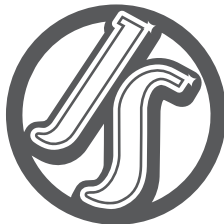




VISIT US ONLINE

Discover our latest products
and information online:

www.jimmystyks.com



**15262 CONNECTOR LANE
HUNTINGTON BEACH, CA 92649
1-800-370-0745 | WWW.JIMMYSTYKS.COM**

MADE IN CHINA